

Library Hours
Monday-Thursday 3:30 pm - 8 pm
Saturday 10 am - 3 pm
Closed Friday & Sunday

Sponsored by
Friends of the
Library

Tel: (972) 294-5801

Friends of
the Library
Newsletter

Little Elm Community Library
500 Lobo Lane
PO Box 598
Little Elm, TX 75068

Pre-sorted
Standard B
U.S. POSTAGE PAID
Little Elm, TX
Permit no. 105

Upcoming Events

CHESS CLUB

Tuesday of every week starting at 7:00 PM until about 8:30 PM. Come join Little Elm Community Library's Chess Club! Open to kids in the 4th Grade through High School. Enjoy the fun and prizes! BEGINNERS WELCOME!!

TODDLER TIME

Every Saturday from 10:30 am until 11:00 am. For toddlers 1 to 3 years of age.

ROBERT SWEETGALL

The Little Elm Community Library will present a seminar with Robert Sweetgall, the real Forrest Gump. Stay tuned for more information.

TRIVIA NIGHT

5th Annual Trivia Contest is just around the corner! Join us for another night full of fun, food and prizes, on January 30th, in the Little Elm High School cafeteria. Festivities begin at 6:45 pm

Membership Form

I would like to become a member of the Friends of Little Elm Community Library group at the following level:

Individual/Family Friends Annual Memberships:

- \$10 - Individual Friend \$ 6 - Individual Senior /Student Friend \$10 - Friends Senior Couple
 \$15 - Friends Family \$50 - \$499 - Good Friend \$500 - \$999 - Special Friend
 \$1000+ - Lifetime Friend Membership

Corporate Friend Annual Memberships:

- \$50 - \$499 - Corporate Sponsor \$500- \$999 - Corporate Advocate \$1000+ - Lifetime Partner Membership

I am not joining the Friends group at this time, but please contact me about volunteer opportunities: _____

Date: _____

Name/Contact: _____

Business: _____

Address: _____

City: _____ State: _____ Zip _____

Telephone: _____ Email: _____

Please mark areas of interest for Library volunteer work:

Work in Library (shelving, covering books, etc.) Reader Hispanic Programs

Children's Programs Chess Genealogy Grants General

Volunteer for Events Donate food or items for events Hostess Crafts

Publicity/Public Relations Junior Volunteer

Please **do not** contact me for volunteer work or donations. _____

Please make your *tax-deductible* membership check to **The Little Elm Community Library**

Trivia Contest Entry Form

It's Time! The Friends of the Library's 5th Annual Trivia Contest is just around the corner! Join us for another night full of fun, food and prizes, on January 30th, in the Little Elm High School cafeteria. Festivities begin at 6:45 pm. Use this card to help you get started putting your team together.

List Team members below:

Cost: \$8.00 per team member (**\$10 @ the door**)
(5-8 members per team)

Team Name

Mail to: Friends of the Library,
PO BOX 598, Little Elm TX 75068



Friends of the Library Newsletter

Volume 4, Issue 1

Winter 2003

► From the President...

The Next Chapter

The Little Elm Community Library Board and the Little Elm Friends of the Library are in the process of transferring the Community Library to a new location. The Library is moving to the new Little Elm City Hall. The new library will encompass over 4,500 square feet, which is 50% larger than our current home at the High School. The target move is late May or early June 2003, allowing the High School to finish their year and to start our summer reading program. Two meeting rooms in the City Hall will be available for library programs in addition to the space in the library. A layout of the new city hall facility is on page 3.

The new location will provide us more room for programs, books, and seating. The new library has double the book capacity of the High School library with 18,000 volumes plus over 12,000 electronic volumes. In addition, we will have 14 public access computers, which is more than double the number the computers provided by any library of comparable size in the North Texas Library Region. The new location will give us more room for programs, books, and seating. This move is just the next step as we continue to grow. The City Hall Master Plan calls for a 20,000 SF stand alone library to be located behind city hall facing a public plaza.

Congratulations to all that made this possible.

Sincerely,

Bill Hidell, President

Little Elm Community Library Board

Volunteer of the Year 2002 ◀

October 19th marked the 4th anniversary of the Little Elm Community Library. On this occasion each year the Volunteer of the Year is recognized. This year's recipient, honored for her volunteer service to the library, was Kathy Bove. Mrs. Bove has served as treasurer for both the Library Board and Friends group since the library's founding in 1998 and personally has done much to promote the growth of library resources. Through Funds for Community Service, a grant program of her employer IBM, Mrs. Bove acquired the Young Explorers computer for the youngest patrons, as well as a \$1000 award for the purchase of bi-lingual computer software for the library computers. This year Mrs. Bove has also worked diligently on drafting the by-laws and constitution for the newly formed Friends of the Library organization. She has also been a strong advocate for the Library at city council meetings and at the county level when issues of cuts to library funding were imminent. Kathy's name has been added to the Volunteer of the Year plaque on display in the library.

► Volunteer Spotlight

This month's volunteer spotlight shines on Lynn Hidell. Lynn has been an active member of the Friends of the Little Elm Community Library since its beginning. She has provided tremendous support to the library through her work and through her generous donations. Lynn holds the position of Historian for the Friends of the Little Elm Community Library. In this capacity, she is responsible for taking pictures at all the Friends' functions and for maintaining the official scrapbooks of



Friends' events. Through Lynn's hard work as Historian, the Friends' scrapbooks provide excellent chronicles of the Friends' activities and achievements.

In addition to serving as Historian, Lynn supports the library in many other ways. She donates her time to process donated books for the library. Lynn also serves as a judge for the Friends' Annual Trivia Contest. Since she is a very good cook, Lynn has provided refreshments at several Library functions, including a reception for the Friends group and for the "Evening of Poetry" held during National Library Week. She helped man the Friends' booth at Autumn Fest. Lynn's craft table at the Library Birthday Party was a hit with the children. With Lynn's help, the children were able to construct a candy airplane and decorate a Halloween Trick or Treat bag.

Lynn and her husband, Bill, owners of Hidell and Associates Architects, live in Little Elm. They have two sons, William and Kyle. Besides her involvement in the Friends of the Little Elm Community Library, Lynn also is a member of the Little Elm Awards Foundation (LEAF) and the Vision Committee of the Little Elm Chamber of Commerce.

We thank you, Lynn, for all your hard work and support for the library and the community.

From the New FOL Board

The New FOL Board thanks all old and new Friends for their participation in creating the new friends organization.

The Friends group has established a Constitution and By-Laws and a new

Little Elm Community Library
500 Lobo Lane
PO Box 598
Little Elm, TX 75068

(Continued from page 1)

slate of officers. The Constitution/By Laws were accepted by the membership and the new board elected at the November 14th meeting. The new board began their term at the November meeting. The following people have been elected:

- President:** Sue August
- Vice President:** Cathy McGowan
- Secretary:** Jennifer Morris
- Treasurer:** Kathy Bove
- Donations:** Jewel Narry
- Membership Coordinator:** Adelle Bell
- Volunteer Coordinator:** Virginia Berney

In addition the to Board, the following people are on the volunteer committee:

- Caller:** Max McGinley
- Statistician:** Sharon Johnson
- Community Events Coordinator:** Dr. Linda Monaco
- Publicity:** Sue August (temporary)
- Documents Developer:** Scott Vivian
- Web Administrator:** Lisa White
- Grant Writer:** Dr. Linda Monaco
- Program Coordinator:** Cathy McGowan
- Historian:** Lynn Hidell
- Chess Leader:** Bill Graham
- Book Review Club Leader:** OPEN

As you can see, we still need a leader for our publicity and Book Review Club. All the committee positions are looking for additional help and support. If you are interested in helping the Volunteer Committee or joining as a friend, please contact our Membership Coordinator, Adelle Bell.

MISSION

The mission of the Friends Group is to build a partnership between the library and the community to advocate for quality library services for all of the people of the Little Elm School District Area.

PURPOSE

The purpose of the Friends Group is to maintain an association of persons interested in the library, to focus public attention in a positive manner on library services, facilities and needs, to help

promote the use and enjoyment of the library, and to develop supplemental funding for the library.

PROGRAM

- Recruit members from the community on a continual basis seeking representation that reflect the community's population.
- Sponsor library programs provided for children, youth and adults.
- Plan and implement fund-raising activities.
- Provide funds to purchase materials and equipment as recommended by the Librarian and/or Trustees.
- Encourage the unrestricted donation of gifts, endowments and bequests to the library.
- Develop and provide social and educational activities as requested by members for the Friends.



Donation Corner

Used books, tapes, and videos are always welcome. All donations are tax deductible.

The Evansville Vanderburgh Library has donated 7 new large print books: "Family Honor", "Pagan Babies", "Southern Cross", "The Big Bad City", "A Painted House", and "Midnight Star". Jo Rankin has donated 4 books: "Gino Badino", "Saturday Belongs to Sara", "Descubro Mi Mundo", and "Miss Alaineus".

Janet Brown has given us "The Crush", "Do You Promise Not To Tell", and "The Remnant".

We have also received a number of used books, movies and books on tape. Among the movies are "Monsters Inc", "Lord Of The Rings-Fellowship of the Ring", "How The Grinch Stole Christmas", and "Star War II, The Attack of the Clones". These were donated by Sylvia Jordan.

You should come by and check out the books and tapes. We would like to thank all of those who give the library their support.

▶ Trivia Contest

Its Time! The Friends of the Library's 5th Annual Trivia Contest is just around the corner! Join us for another night full of fun, food and prizes, on January 30th, in the Little Elm High School cafeteria. Festivities begin at 6:45 pm. Register early, only \$8.00 per person, \$10.00 at the door on Trivia Night.

Forrest Gump? ◀

In the upcoming months the Little Elm Community Library will present a seminar with Robert Sweetgall, the real Forrest Gump. Sweetgall has walked seven times across America and is the only person to walk 50 states (11,208 miles) in 365 consecutive days. Author of 17 books, Robert has appeared on numerous radio and talk shows including NBC Today Show, Evening Magazine, Kathy and Regis Live, and National Public Radio. Sweetgall has made over 400 presentations to over one million people. In his former life Robert Sweetgall was an overweight Brooklyn boy, cheesecake lover, high school valedictorian, Dupont Chemical engineer and ultra-marathoner. Motivated by a family history of heart disease, Robert gave up his job at Dupont to take his health message on the road, literally. Come listen to this motivational speaker when he is in town. Be prepared to get up and move and be totally entertained!

Stay tuned for more information.

Library Hours

Monday-Thursday 3:30 pm - 8 pm
Saturday 10 am - 3 pm
Closed Friday & Sunday

▶ Newsletter Donations

Please enjoy this complementary newsletter. An annual donation of \$5 is appreciated! Please make checks payable to:

L.E. Community Library
PO Box 598
Little Elm, TX 75068

Membership

With your membership and involvement in the Friends of the Little Elm Community Library, you can make a difference. As a **Friend** you will receive many benefits, including a Friends of the Little Elm Community Library book bag, the Friends newsletter, invitations to special programs and other Friend's group happenings, special membership discounts to events and book clubs, the opportunity to select and vote for executive board members and the opportunity to serve as a volunteer.

There are also opportunities for businesses to support the Little Elm Community Library through the **Corporate Friend** program.

A **Corporate Sponsor** who joins as a Friend at the \$50 - \$499 level will receive all the **Friend** benefits and a framed membership certificate ready to hang. Also their

company name will be mentioned in the community newspaper and group newsletter.

A **Corporate Advocate** membership at the \$500 - \$999 level includes all of the above benefits and recognition of their patronage in the Friend's newsletter, in community papers and on all printed literature that the Friends group creates.

A **Life Time Partner** contributing \$1000 or more will receive all of the above benefits and in addition their name will be engraved on a plaque on view at the library honoring all Lifetime Members

Become a member now by completing a Friends of the Little Elm Community Library Membership Form. Make your tax-deductible membership check to "The Little Elm Community Library, PO Box 598, Little Elm, Texas 75068". Or you can contact Adelle Bell by telephone at 972-292-0055

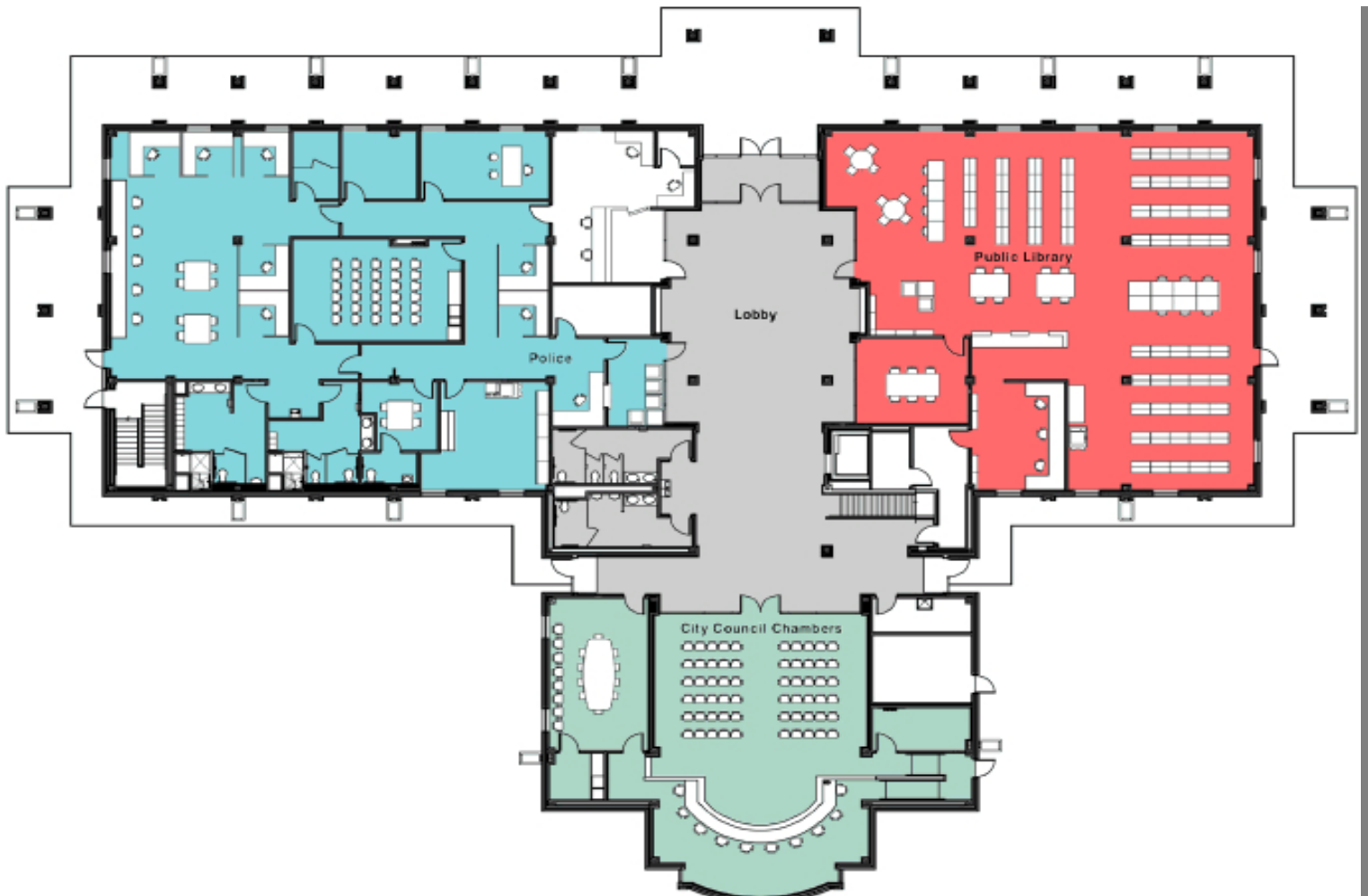
or by email at abell15@earthlink.net.

This is your last chance!!!!

Our community has grown to over 9,000 newsletters. The Friends group will be unable to continue creating this newsletter for our area distribution. However, for a donation of \$5.00 you can receive a year's subscription to the FOL Newsletter. If you become a member of the Friends organization, you will receive a free tote bag and a year's subscription to the Friends newsletter. The newsletter will be published quarterly. See the membership section for additional information.

Little Elm City Hall

Below is a layout of the new Little Elm City Hall Facility. It is scheduled to open the summer of 2003.



Little Elm Community Library Calendar

UPCOMING EVENTS

January 2003

- Every Saturday @ 10:30 AM - Toddler Time
- Every Tuesday @ 7 PM - Chess Club
- **January 16th @ 7 PM** - FOL Meeting
- **January 30th @ 6:45 PM** - Trivia contest at the High School


January 2003

Mon	Tue	Wed	Thu	Fri	Sat
		1	2	3	4 Toddler Time @ 10:30
6	7 Chess Club @ 7	8	9	10	11 Toddler Time @ 10:30
13	14 Chess Club @ 7	15	16 FOL Meeting @ 7	17	18 Toddler Time @ 10:30
20	21 Chess Club @ 7	22	23	24	25 Toddler Time @ 10:30
27	28 Chess Club @ 7	29	30 Trivia Contest @ 6:45	31	

February 2003

February 2003


- Every Saturday @ 10:30 AM - Toddler Time
- Every Tuesday @ 7 PM - Chess Club
- **February 20th @ 7 PM** - FOL meeting

Mon	Tue	Wed	Thu	Fri	Sat
					1 Toddler Time @ 10:30
3	4 Chess Club @ 7	5	6	7	8 Toddler Time @ 10:30
10	11 Chess Club @ 7	12	13	14	15 Toddler Time @ 10:30
17	18 Chess Club @ 7	19	20 FOL Meeting @ 7	21	22 Toddler Time @ 10:30
24	25 Chess Club @ 7	26	27	28	

March 2003

March 2003

- Every Saturday @ 10:30 AM - Toddler Time
- Every Tuesday @ 7 PM - Chess Club
- **March 20th @ 7 PM** - FOL meeting

Mon	Tue	Wed	Thu	Fri	Sat
					1 Toddler Time @ 10:30
3	4 Chess Club @ 7	5	6	7	8 Toddler Time @ 10:30
10	11 Chess Club @ 7	12	13	14	15 Toddler Time @ 10:30
17	18 Chess Club @ 7	19	20 FOL Meeting @ 7	21	22 Toddler Time @ 10:30
24	25 Chess Club @ 7	26	27	28	29 Toddler Time @ 10:30

Library Hours

Monday-Thursday 3:30 pm - 8 pm
Saturday 10 am - 3 pm

Phone: (972) 294-5801

Winter 2003